

Contents

Document History.....	1
Introduction.....	1
New and improved	2
Life cycle Management.....	2
Display FQDN/UPN name	2
Edit user configuration script	3
Browse folder	3
Copy and paste from content and detail panel.....	4
Unhealthy agent view.....	4
Unlink all packages when reinstalling a client	5
Performance optimization.....	5
Specify Public IP for WSUS server.....	6
Add Advertised package to unit.	7
Performance guard integration extended.....	8
Minor changes.....	8

Document History

This document is written in October 2010 by Jan Koch (CTO)

Introduction

The following document contains an overview of new and improved features in the CapaInstaller Service update 2 2010.

New and improved

In the following section new and improved features are listed

Life cycle Management

With this service update it is now possible to recognize the computer/server based on the UUID (Universally unique identifier) and the user based on the UPN (User principal name). This feature makes it easier to managed objects from they are “born” in the organization until the reaches end of life. E.g. a computer can now change the netbios name without any impact to the agent/package status in CMS. Two units can now have the same netbios name (if they are on different networks) and still be recognized as two units in CMS. To enable UUID and UPN recognition select option – System administration.

Agent recognition

These settings determine how agents identify computers and users

- Use UUID for computer recognition
- Use User Principal Name (UPN) for user recognition

Be aware: When the option has been enabled it is not possible to return to the previous configuration. Third part solutions may fail due to lack of compliancy. Contact CapaSystems for further information.

Display FQDN/UPN name

When this feature is enabled the fully qualified domain name for the computer and user principal name for the user is displayed when listed in the console. The feature can be enabled from option – System administration.

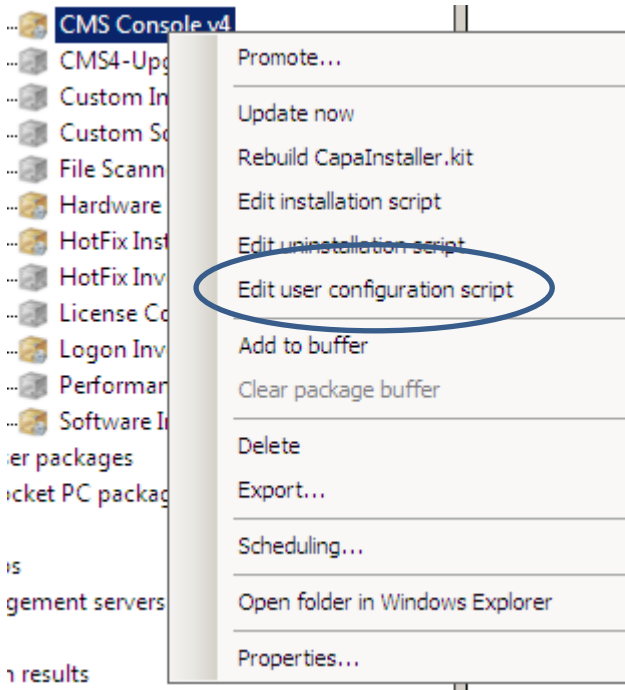
General CMS Settings

These settings are general settings relevant accross multiple plugins

- Enable Auto Search in search window
- Show units with fully qualified name/user principal name (requires restart of the console)

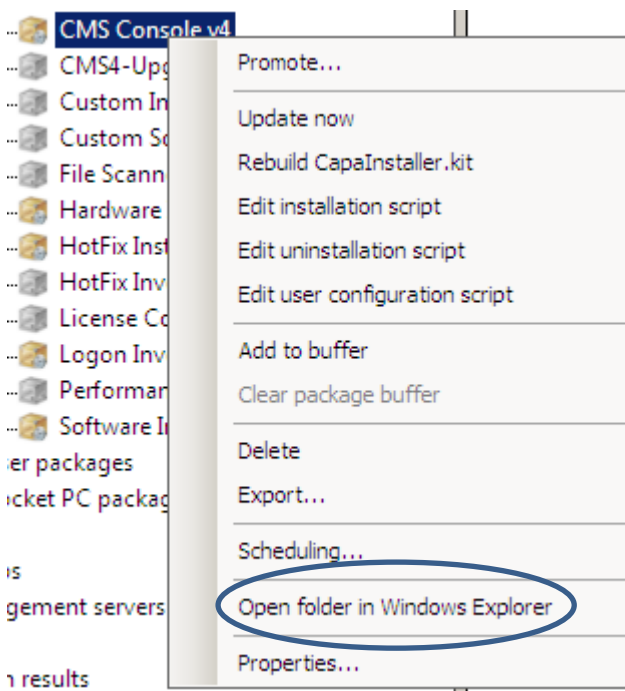
Edit user configuration script

Using this new feature it is possible to edit the user configuration script for the package. This option is only available when a root point package is selected e.g. development.



Browse folder

Using this feature it is possible to browse the package folder using the Windows Explorer. This option is only available when a root point package is selected e.g. development.

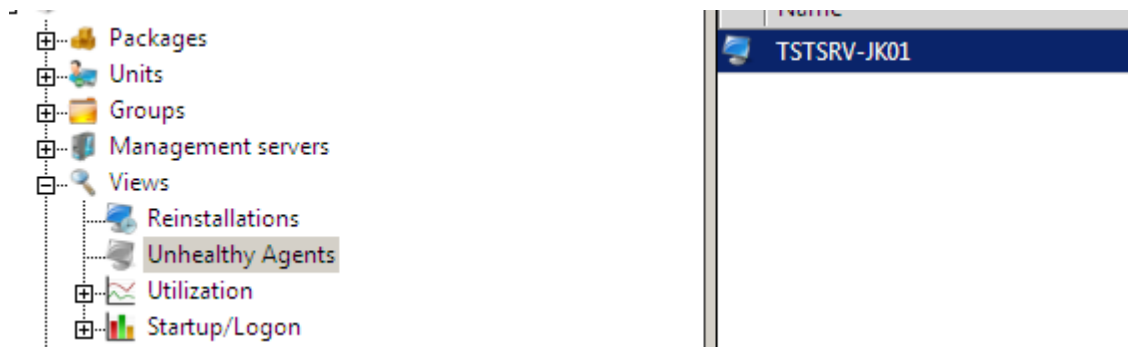


Copy and paste from content and detail panel

It is now possible to copy and paste from the content and detail panel in Configuration Management making export to e.g. Microsoft Excel very easy.

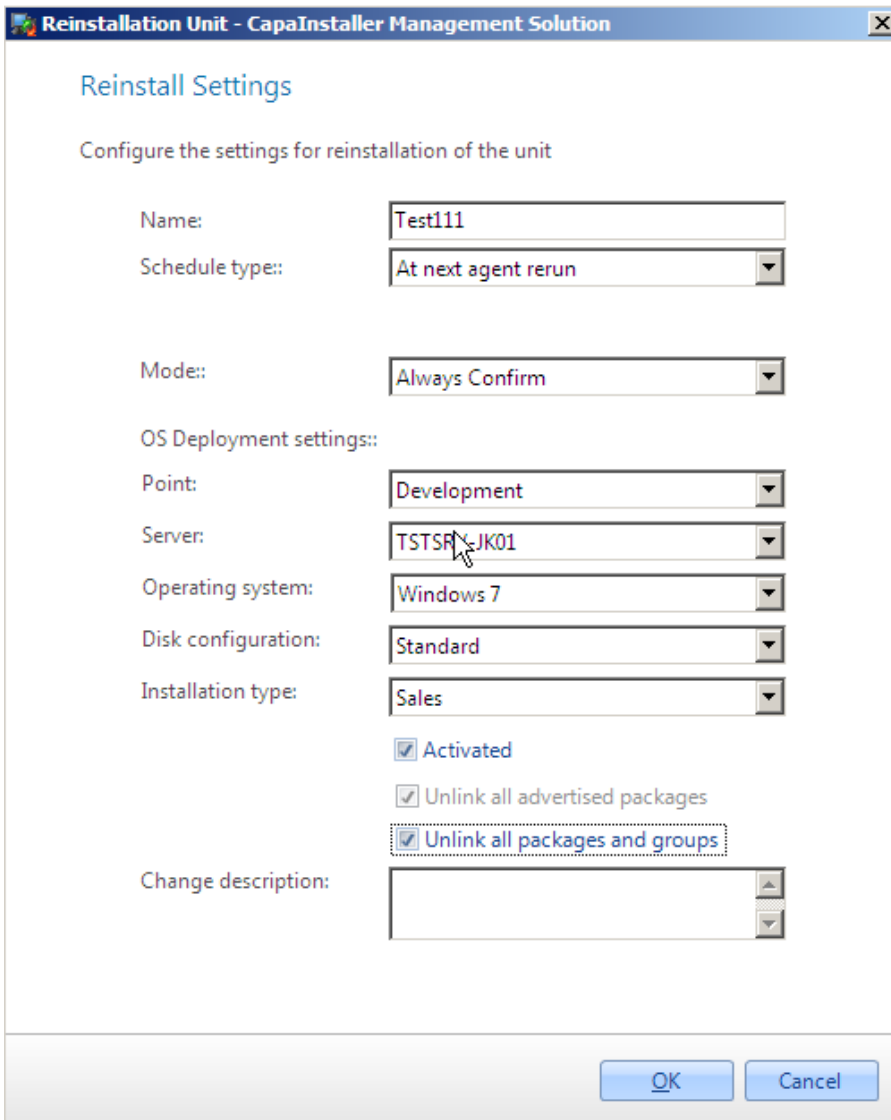
Unhealthy agent view

Unhealthy agent has been moved from the static group named "unhealthy agents" to a separate view



Unlink all packages when reinstalling a client

This new option “unlink all packages and groups” will unlink the unit from all groups and all packages during reinstallation.



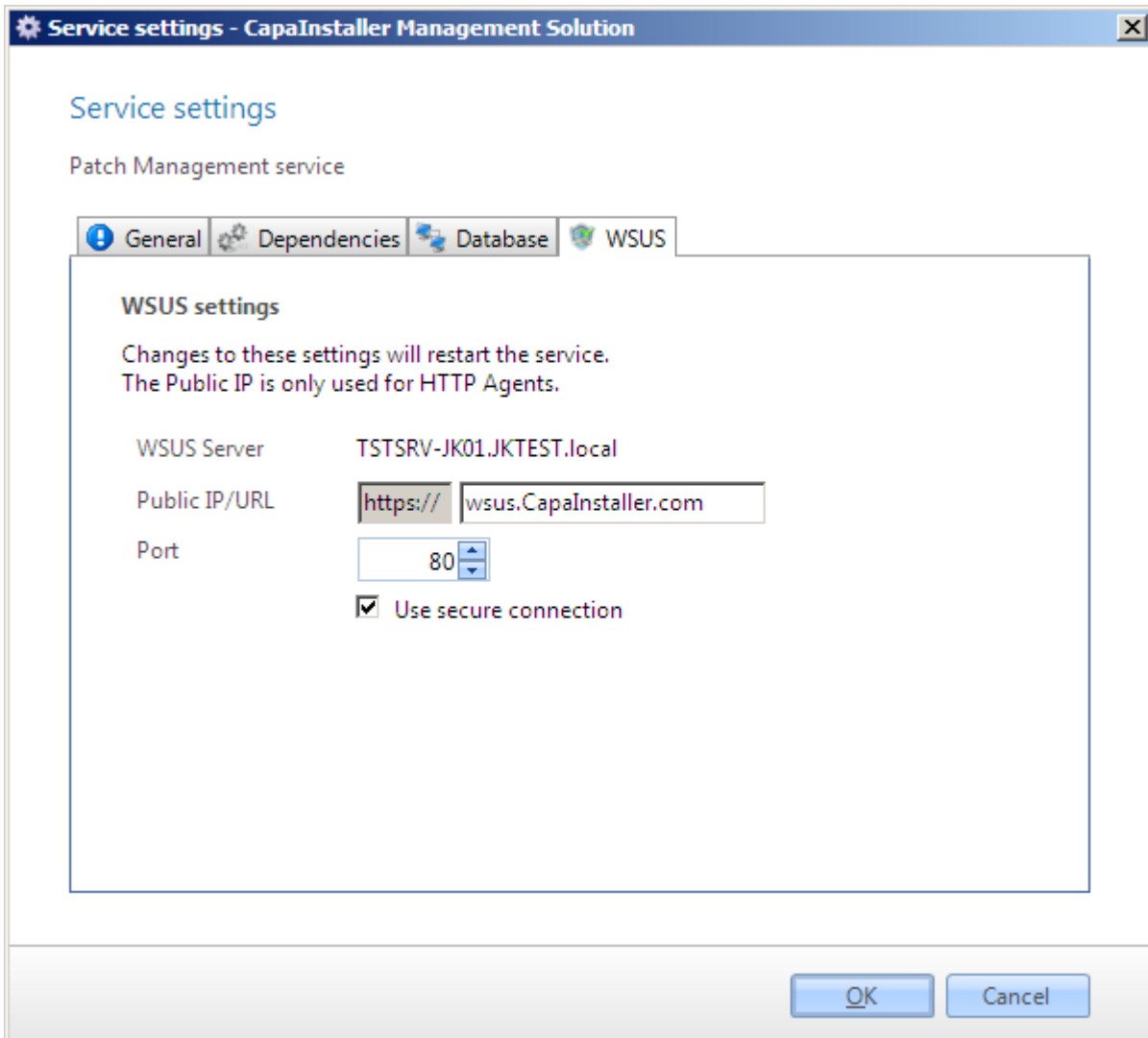
Performance optimization

The following performance optimizations have been implemented:

- a. Select statements has been analyzed and optimized
- b. Various information has been cached for the process resulting in fewer queries against the database
- c. Load unit/packages/groups in Configuration Management

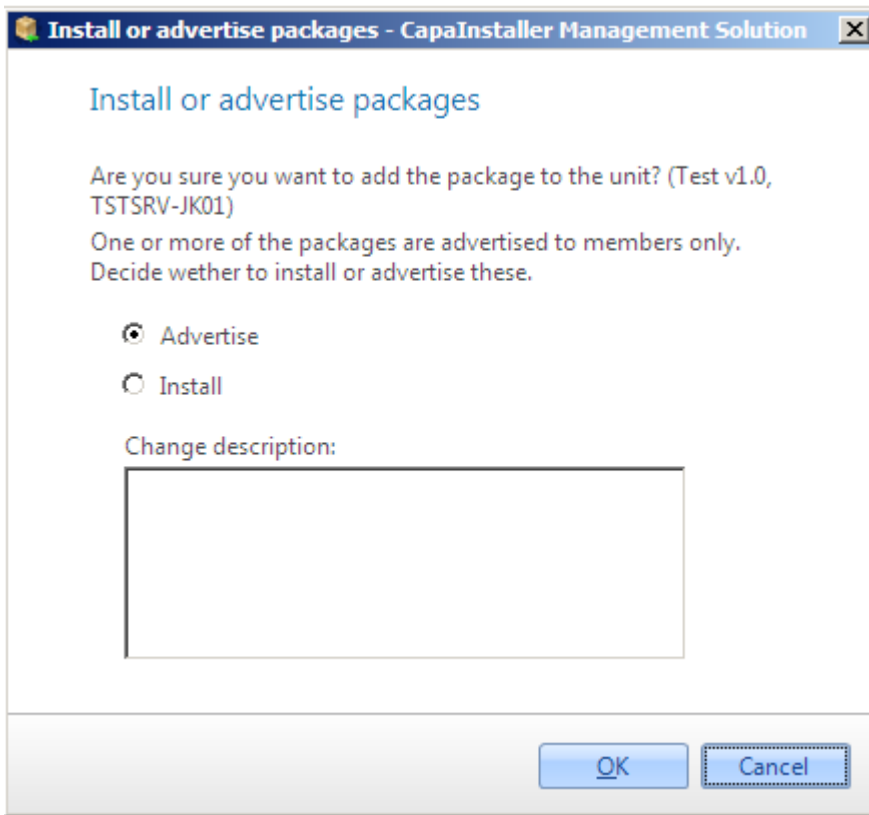
Specify Public IP for WSUS server

The public IP address can now be specified as an URL or an IP address.

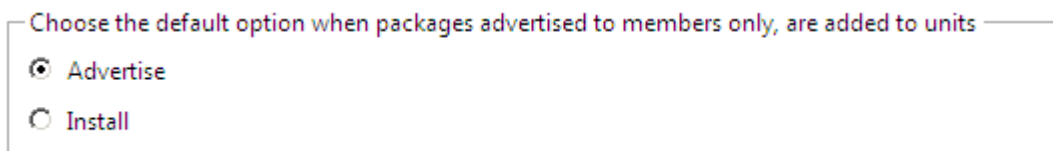


Add Advertised package to unit.

When a unit is linked directly to an advertised package it is possible to install the package directly instead of publishing this to the catalog.



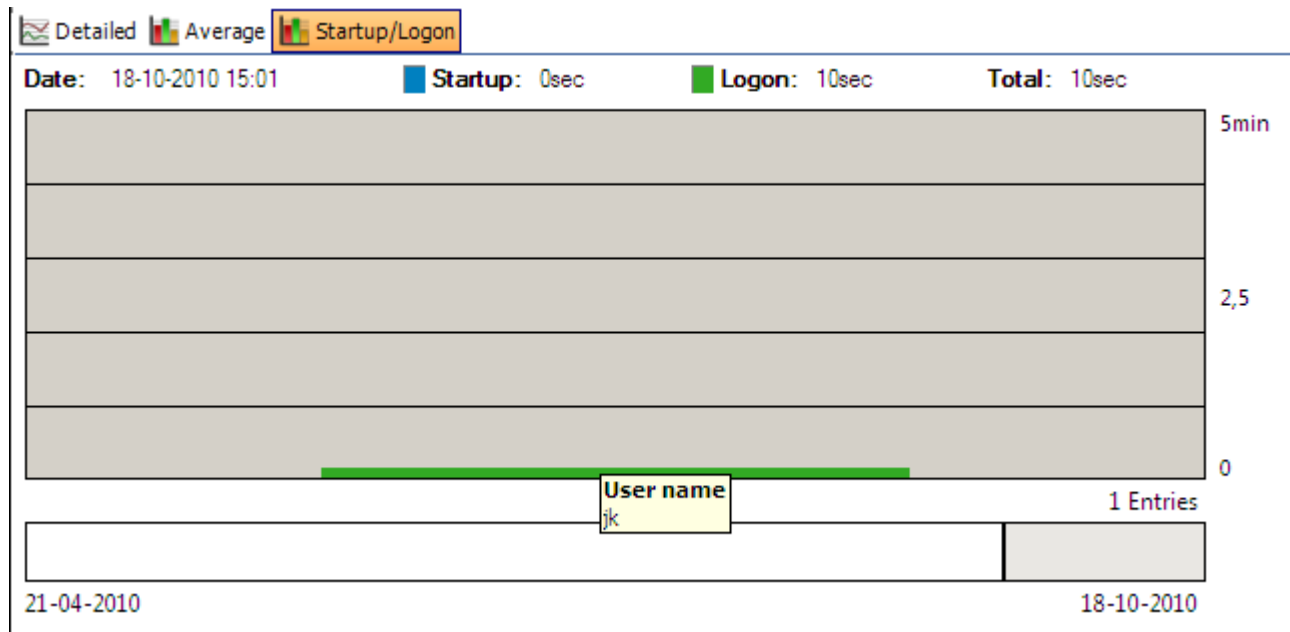
From options it is possible to specify the default value



In the future this option is expected to be available in other part of the code. E.g. when a package is added to a group.

Performance guard integration extended

User name displayed in startup/logon tab when hovering over the bar.



Minor changes

Various bugs has been fixed as well. For further information see <http://serviceupdate.capasystems.com>